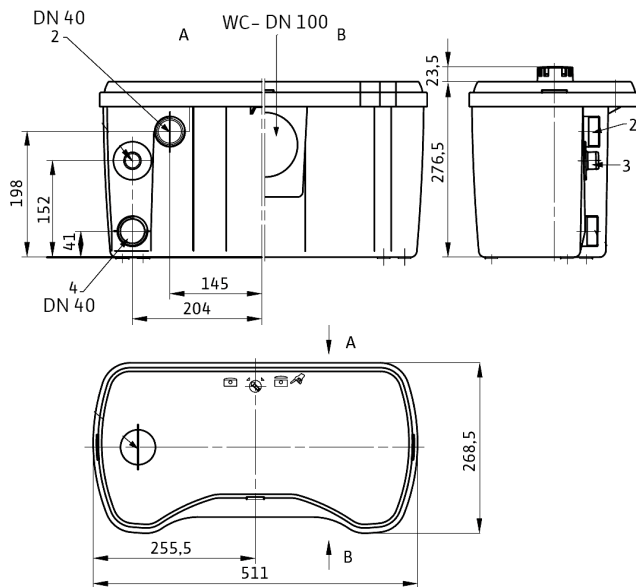
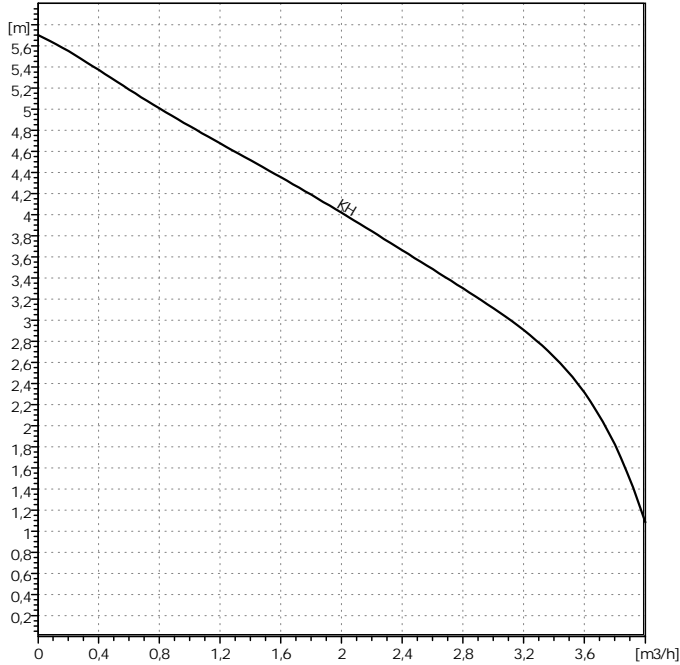


KH 32-0,4 1~



17/01/11

1 / 1



0	m ³ /h
0	m
20	°C
0,9983	kg/dm ³
1,005	mm ² /s
0,02337	bar

WILO	
KH 32-0,4 1~	
PN 6	
Max. 0	°C
40	°C

()	m ³ /h
	m
2800	1/min

/	457
---	-----

	mm
--	----

--	--	--	--	--	--	--	--	--	--

DN 100 / PN 0	
DN 25/32 PN 0	
7,8	kg

2	0,4	kW
	2800	1/min
	1~230 V, 50 Hz	
	2,1	A
	IP 44	
	+/- 10%	

	2011011
--	---------